



Extra Clean And Pure

PENTAIR Dual-Faucet Water Purifier



Grade-1 Water Efficiency;
High Performance and
Energy Saving



Dual-Outlet Design;
Free Flow of
Potable Water



Smart Display;
Reminder for Filter
Replacement



Integrated
Water-Route

Smart, Sustainable Water Solutions.
FOR LIFE.



Pentair Offices in South East Asia

Singapore

390 Havelock Road
#04-01 King's Centre
Singapore 169662
Tel: +6567685900

Philippines

5th Floor MAIA Suites
1747 Nicanor Garcia Street corner
D.Oliman Street Makati City, Philippines
Tel: +632824 3825

Thailand

16th Floor, The Ninth Towers Grand RAMA 9,
Tower B 33/4 Rama 9 Road, Huaykwang
Bangkok 10310, Thailand
Tel: +6621681092

pentair.com

All Pentair trademarks and logos are owned by Pentair. All other brands or product names are trademarks or registered marks of their respective owners. Because we are continuously improving our products and services, Pentair reserves the right to change specifications without prior notice.

Pentair is an equal opportunity employer.

S2000-SEA a 20/01 ©2020 Pentair. All Rights Reserved.

© Notice /™ Ownership Statement

Smart, Sustainable Water Solutions.
FOR LIFE.



At Pentair, we believe the health of our world depends on reliable access to clean water. We deliver a comprehensive range of smart, sustainable water solutions to homes, business and industry around the world. Our industry leading and proven portfolio of solutions enables people, business and industry to access clean, safe water. Whether it's improving, moving, or enjoying water, we help manage the world's most precious resource. Smart, Sustainable Water Solutions. For Life.

Extra Clean And Pure

Simple, easy, for top purity

Purify your body and mind in the simplest way

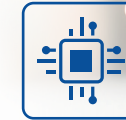
Happiness starts from a glass of clean and pure water



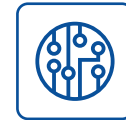
Grade-1
Water
Efficiency



Dual-Outlet
Design



Smart Digital
Display



Integrated
Water-Route
Board



Sleek
Minimalist
Design



3-Step
Cartridge
Replacement



Truly Water-Saving To Maximise Efficiency

Elevated Efficiency. **FOR LIFE.**

Top water efficiency for less water consumption

Enjoy purified water while achieving water saving

Professionally certified Grade-1 water efficiency

The best of both worlds: Energy Saving and environmental friendly

*As required by GB34914-2017 *Minimum allowable value of water efficiency and water efficiency grades for reverse osmosis drinking water treatment purifiers; there are 5 grades of water efficiency for reverse osmosis water purifiers; the highest being Grade-1. Water purifier must attain at least the Grade-2 to be classified as water-saving water purifier.



Dual-Faucet Design for Simplicity of Use

Innovation. FOR LIFE.

Equipped with Two filtration modes; make the choice as required

An avant-garde design, a breakthrough in water purifier design that offers both potable pure water or clean water for hygiene within a single machine



Clean water for hygiene

Cleaning vegetables and fruits; rinsing rice; washing utensils and tableware

Potable pure water

For drinking; for cooking rice and soups; also good for making coffee or tea



Smart Digital Display, Advanced and Trendy

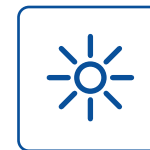
Smart Solutions. FOR LIFE.

Smart visual display showing quality of purified water

LED display panel; LED ring light on faucet
Water leakage alarm; Automatic flushing
A clear view of water quality and cartridge lifespan



Filtration Efficiency Display (TDS Value)



Status Indicator (Processing; Flushing; Leakage; Abnormality)



Lifespan Display (Shows remaining lifespan of cartridge)



Function Buttons (Select; Flush; Reset)



* We consume far more water domestically in rinsing rice and cleaning vegetables and utensils than drinking. One single RO membrane would struggle to cater for all these demands. It not only damages the RO membrane prematurely, but also results in large quantity of waste water – a great waste of natural resource.

* The dual-faucet water purifier separates hygienic water from drinking water. Clean water for daily washing usage passes only through the first filtration and bypasses the RO membrane filtration. This not only effectively protects the RO membrane to lengthen its lifespan, but also enables huge saving of water.

Integrated Water-Route Board: Worry-free Cartridge management

Unmatched Reliability. **FOR LIFE.**

Integrated water-route technology for easy and safe use

- Pentair water purifier uses patented integrated water-route board
- Much lower probability of water leakage ensures safe usage
- Much easier and safer cartridge replacement



Compact and Space-Saving Design

Pure Precision. **FOR LIFE.**

Sleek, petite and minimalist, for a modern feel

Sleek and compact design fits into smaller homes. With more space, you and your family can take life light and easy.

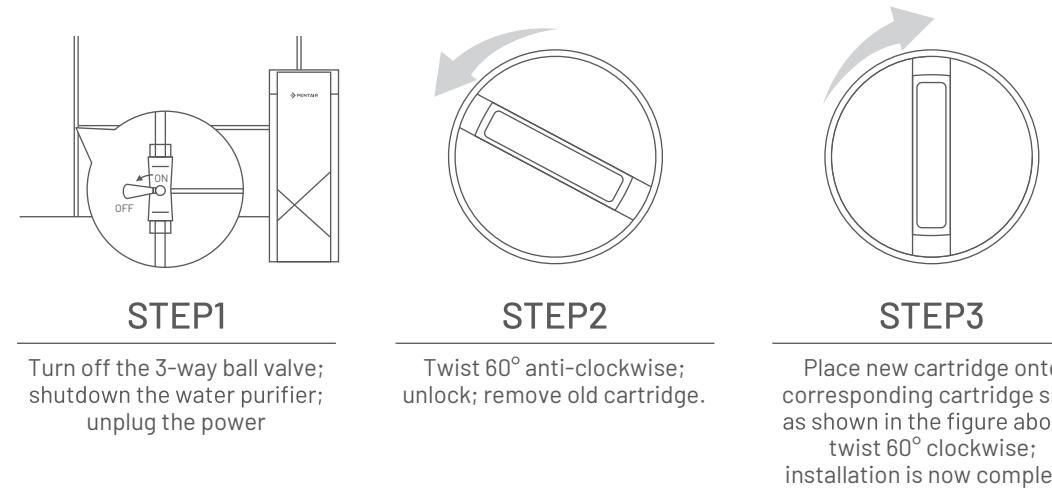


Fast Cartridge Replacement for Elegant Lifestyle

Pure Relaxation. **FOR LIFE.**

Integrated Cartridge element; Quick and easy 3-step cartridge replacement

An integrated quick-change cartridge – only 3 steps to complete replacement
A built-in auto-shutoff valve enables safe and convenient cartridge replacement.



Pentair Dual Faucet Water Purifier Technical Specification

Model	S2000 - SEA
RO Membrane Performance	50GPD
System Flowrate	Up to 1.5L/min
Outlet(s)	Dual Faucet: Pure Water and Clean Water
Appearance	Cabinet Type
Product Dimensions	438 x 132 x 361mm
Inlet Water Quality	Chlorinated City Water
Inlet Water Pressure	15 - 55 PSI
Operating Pressure	60 - 115 PSI
Operating Environment	Ambient temperature 4°C - 40°C, relative humidity ≤90% (indoors)
Power Supply	110 - 220V, 50/60Hz
Power	25W
Display	<ul style="list-style-type: none"> TDS Value; System status indicators: Processing; Flushing; Leak; Error Individual cartridge lifespan progress bars+ Cartridge replacement reminder Function Buttons: Select Button; Flush Button; Reset Button
Faucet LED Light Indicator	Yes
Cartridge Replacement Reminder	Alarm Beep
Leakage Alarm	Display + Beep
Cartridge Type	Disposable Cartridge
Booster Pump	Built-In
Water Storage Tank	External