



# Everpure 20BB UF Ultrafiltration Filter Product Manual

## 1. Product Uses

The Everpure Dirtyclean CPF-20BB/40BB ultrafiltration water purifier provides drinking water by purifying tap water.

## 2. Technical Specifications

Model Name: Everpure 20BB UF / Everpure 40BB UF Ultrafiltration filter

Filter Type: 20BB UF/ 40BB UF

Standard Size: 108\*540mm/108\*800mm

Filtration Precision: 0.1µm

Filter Element: PVC

Shell Material: ABS Plastic

Structure Type: Internal Pressure

Operating Temperature: 5-38°C

Working Pressure: 0.14-0.35MPa

Purifying Results: Purifies and treats tap water

Recommended Service Life \*:12-36months

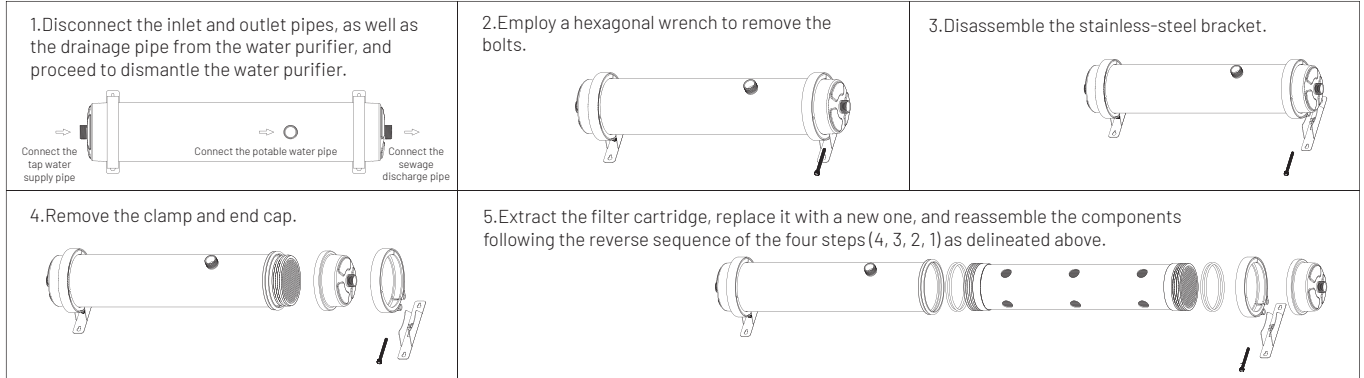
\* The actual service life of the filter element will vary based on actual water use conditions and local tap water quality.

## 3. Instructions for Use and Precautions

1. After the ultrafiltration membrane filter passes the test, connect it to the inlet water pipeline and flush it for at least 10 minutes before it can be used normally.
2. During normal use, when the water flow through the ultrafiltration membrane filter drops significantly, replace it with a new filter element.
3. Storing the ultrafiltration membrane filter away from direct sunlight and moisture. It can be stored for 1 year if the package is unopened.

## 4. Filter Replacement Procedure

1. Close both the inlet and outlet valves to preclude water leakage within the pipelines.
2. Disassemble the water purifier by unscrewing the fasteners, opening the covers at both ends, and carefully extracting the ultrafiltration membrane.
3. Thoroughly cleanse the interior of the water purifier. Subsequently, install the new ultrafiltration membrane, ensuring the proper placement of the accompanying O-rings. Reassemble the additional components in adherence to their original configuration.
4. Execute the aforementioned steps meticulously to finalize the water purifier filter replacement process. Reinstall the water purifier at its designated location and ensure leak-free operation by following the prescribed initial usage guidelines.



## 5. Common Fault Analysis

Abnormal Situations:	Possible causes:	Maintenance Procedures:
No filtration effect	Poor sealing at the connection of the ultrafiltration membrane filter element	Reconnect and reinstall
Reduced water output	Blockage in the filter cartridge	Clean the filter cartridge
No water output	Severe blockage in the filter cartridge	Replace the ultrafiltration membrane filter element



### Pentair Offices in South East Asia

#### Singapore

390 Havelock Road  
#04-01 King's Centre  
Singapore 169662  
Tel: +6567685900

#### Thailand

16th Floor, The Ninth Towers  
Grand RAMA 9, Tower B  
33/4 Rama 9 Road, Huaykwang  
Bangkok 10310, Thailand  
Tel: +6621681092

#### Philippines

5th Floor MAIA Suites  
1747 Nicanor Garcia Street corner  
D.Oliman Street Makati City,  
Philippines  
Tel: +632824 3825

All indicated Pentair trademarks and logos are property of Pentair. Third party registered and unregistered trademarks and logos are the property of their respective owners.

©2024 Pentair. All Rights Reserved.