

Technical Parameters

Product Description		Everpure HERO Series Blending System		
Product Specifications		800G	1200G	1600G
Product Dimensions (mm) Excluding base height ⁵		482*280*608	493*280*708	493*280*708
Inlet Water Pressure (MPa)		0.2-0.4		
Operating Pressure (MPa)		0.25-0.85		
Purified Water Output	Purified Water Flow Rate ⁶ (L/min)	2	3	4
	Rate Total Volume of Purified Water ⁶ (m ³)	13	15.5	16
Purified Blended Water Output	Blended Water Flow Rate ⁶ (L/min)	3	4.4	5
	Rated Total Volume of Blended Water ⁶ (m ³)	15	19	21
Operating Weight (kg)		27	30	30
Rated Power Supply Frequency (Hz)		220V-50	220V-50	220V-50
Rated Power (W)		85	165	165
Applicable Water Quality		Municipal tap water		
Applicable Water Temperature (°C)		5-38		
Applicable Ambient Temperature (°C)		4-40		
Water Quality Standards for Output Water	Purified Water Quality Standards	"Hygienic Safety and Functional Evaluation Specifications for Domestic Drinking Water Quality Processors - Reverse Osmosis Treatment Devices" (2001)		
	Purified Blended Water Quality Standards	"Hygienic Safety and Functional Evaluation Specifications for Domestic Drinking Water Quality Processors - General Water Quality Processors" (2001)		
Product Implementation		Q/320505PT302		

1. According to the inspection and testing reports from the Nanjing Municipal Product Quality Supervision and Inspection Institute, the product quality is as follows: NZJ (2025) FR01-07565Z, NZJ (2025) FR01-07584Z, NZJ (2025) FR01-07585Z, NZJ (2025) FR01-07587Z
2. According to the Najing Municipal Institue of Product Quality Supervision and Inspection, the water efficiency test report for the water purifier is NZJ (2026) FR01-00542Z, China Certification & Inspection Group Physical and Chemical Testing Co., Ltd., Water Purifier Water Efficiency Test Report SHJSQ26003228001-1, SHJSQ26003228001-2
3. According to the utility model patent certificate, patent number ZL2020222785522
4. According to the utility model patent certificate, patent number ZL2024220493918
5. The dimension above apply only to the HERO unit. For example, if the HERO 800 requires and additional stand or base, it will increase the height by 72mm
6. According to Jiangsu Province Water-Related Product Hygiene Permit No. (Su) Wei Shui Zi (2025) 3205-0215



Pentair Offices in South East Asia

Singapore
390 Havelock Road
#04-01 King's Centre
Singapore 169662
Tel: +6567685900

Thailand
16th Floor, The Ninth Towers
Grand RAMA 9, Tower B
33/4 Rama 9 Road, Huaykwang
Bangkok 10310, Thailand
Tel: +6621681092

Philippines
5th Floor MAIA Suites
1747 Nicanor Garcia Street corner
D.Oliman Street Makati City, Philippines
Tel: +632824 3825



AUTOMATIC TDS ADJUSTMENT THAT GIVES YOU A TASTIER BREW

EVERPURE HERO SERIES BLENDING SYSTEM



Automatic TDS Adjustment



NSF Certified RO Membrane



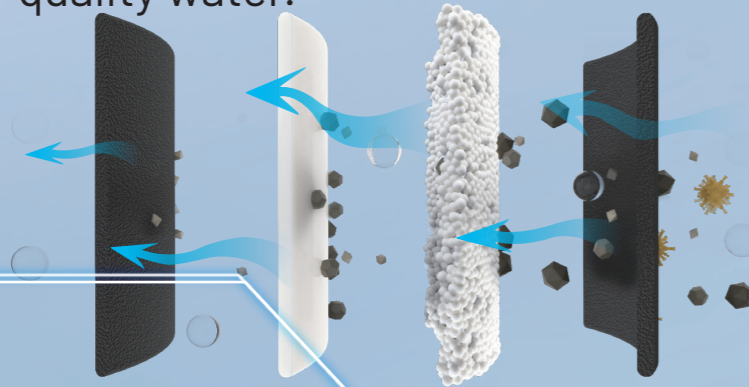
Class 1 Water Efficiency



Smart Digital Display

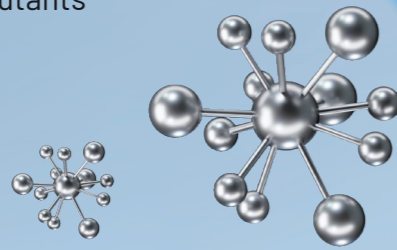
High-Performance Filter Cartridge Combination

Efficient filtration producing high-quality water.



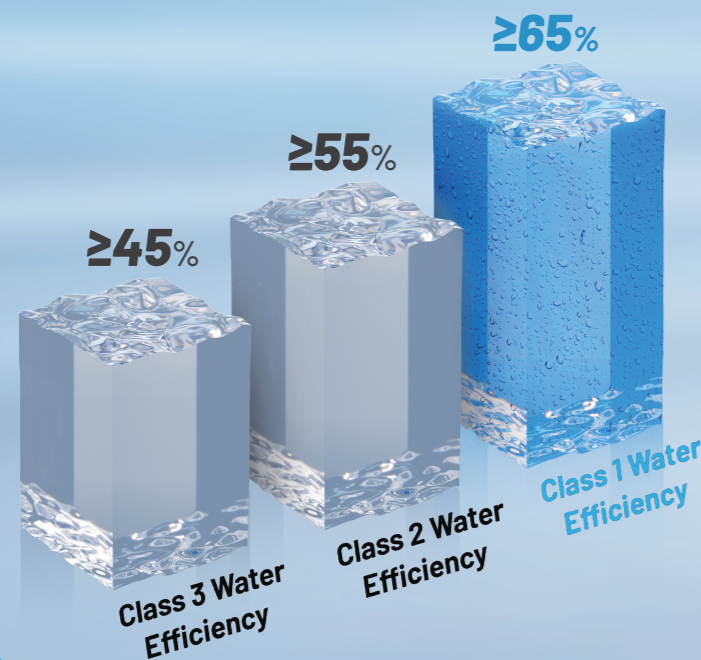
Pre- and Post- Filter Composite Elements

- The reinforced composite filter element has a filtration precision of up to **0.5 microns**, effectively removing chlorine, chloroform, carbon tetrachloride, volatile phenols, and other organic pollutants
- Silver-loaded antibacterial formula effectively inhibits bacterial growth¹, with an antibacterial rate greater than **99.9%**



NSF Certified RO Membrane

- High-quality RO membrane ensures a stable desalination rate, providing safe drinking water
- Class 1 water efficiency, with a water production rate² of up to **65%**, highly efficient, energy-saving, and environmentally friendly



Patented TDS Automatic Adjustment

Smart display facilitates an efficient operation.

Patented Electronic Valve³

- Initial setup takes only **3 minutes** for first-time installation
- Adapts to water quality fluctuations after the initial adjustment. TDS value is automatically adjusted with high accuracy and an error range of approximately **15%**



Smart Digital Display

- LED touchscreen displays real-time monitoring of water quality, flow rate, and filter lifespan, providing a clear overview of the operating status
- IoT intelligent remote control platform supports an integrated and efficient operation and management

EVERPURE		2026-01-01 08:00:00	
UF	100%	流量	混水
前置	100%		
RO	100%		
后置	100%		

Multi-Dimensional Configuration

Supports a stable and smooth business operation.

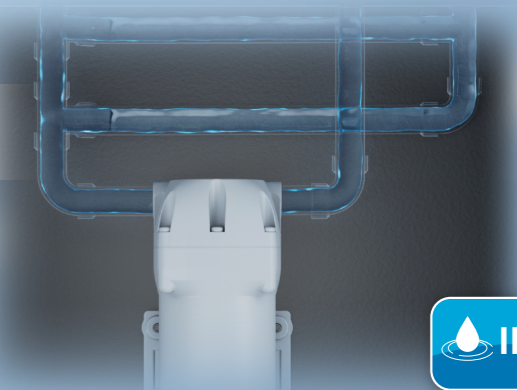
Multi-Stage Flushing

- Unique multi-stage flushing design optimises water flow and prevents cross contamination
- Easy filter replacement saves time and labour, ensuring an efficient maintenance



Dual Protection

- Patented water pump protection system⁴ with an IPX4 waterproof rating provides dual protection for water circuit safety and equipment stability, significantly extending system lifespan



Compact Structure

- Integrated and compact structure allows the system to be flexibly installed under cabinets or wall-mounted, adapting to different spaces

